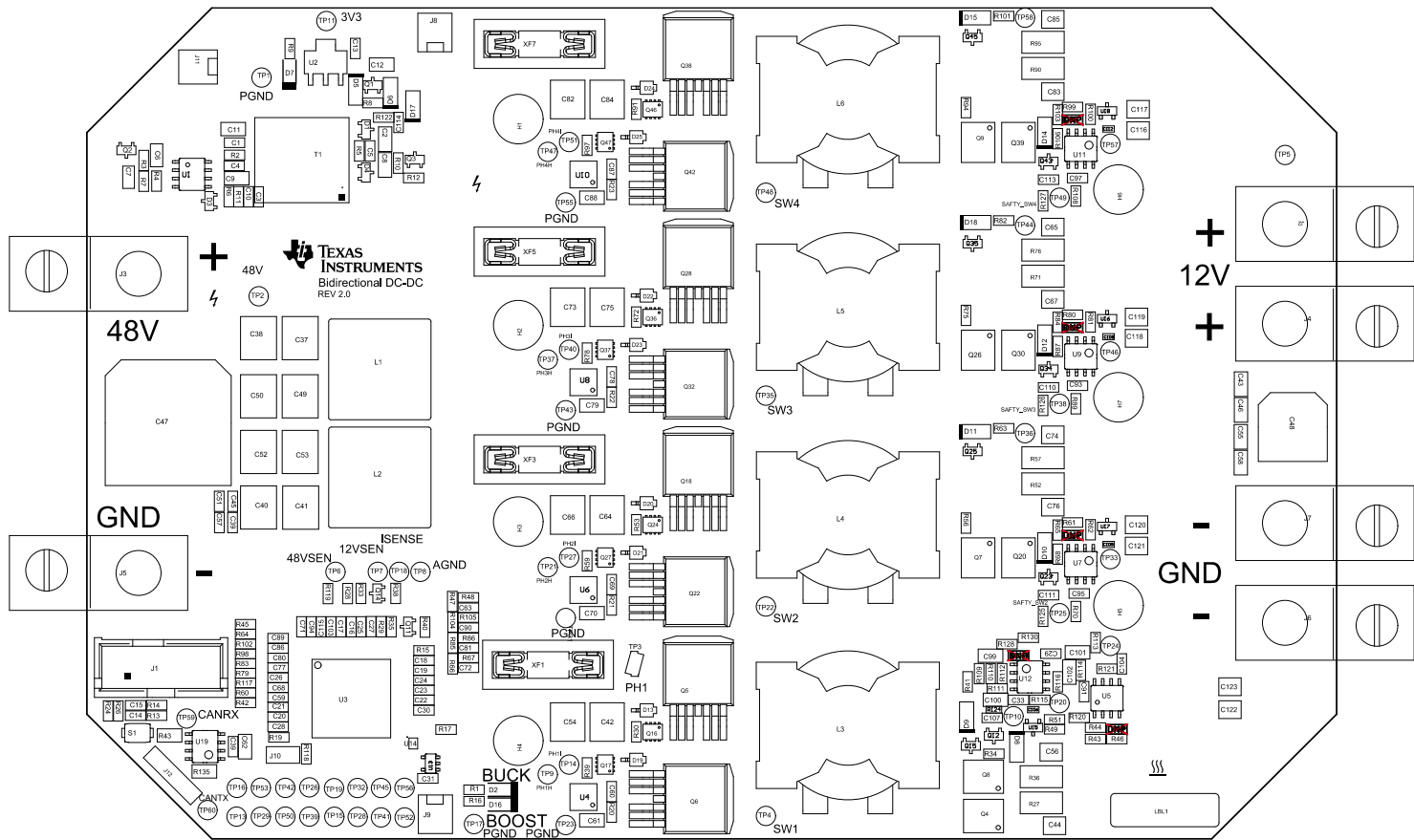


- Z24 ■ These assemblies must comply with workmanship standards PCA-640 Class 2, unless otherwise specified.
- Z23 ■ These assemblies must be clean and free from flux and all contaminants. Use of no clean flux is not acceptable.
- Z22 ■ These assemblies are ESD sensitive. ESD precautions shall be observed.
- Z21 ■ Test(s) listed in adjacent column box after first wash. Test shall be 8 pin port. Test shall be per the Listed Table in the PDF schematic.



Top Overlay

PCB VIEWED FROM TOP SIDE	BOARD #:	XX####	REV:	E1	SUN REV:	Not In Version Control
IGNORE ->						
PLOT NAME :-	Top Assembly Drawing	GENERATED :	8/31/2015	11:15:41 AM	TEXAS INSTRUMENTS	